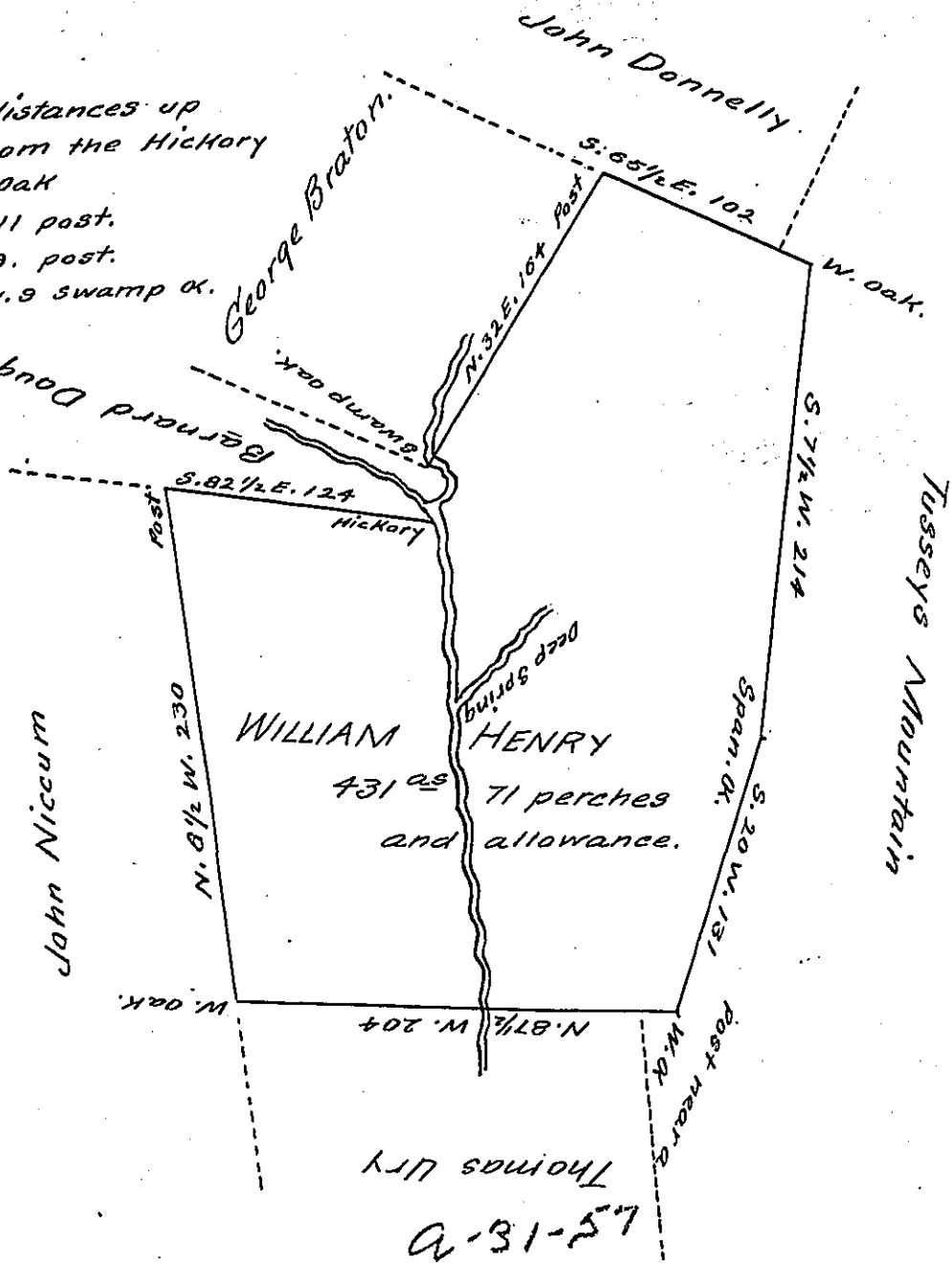


Courses and distances up
Tusseys Run from the Hickory
to the Swamp oak

- N. 7 1/2 W. 11 post.
- N. 34 E. 8. post.
- N. 25 1/2 W. 9 swamp oaks.

C135-40



SITUATED in Providence Township Bedford County, in Crails Valley,
on Tusseys Run, Containing 431 acres 71 perches and the usual -
allowance for Roads &c. Surveyed the 29th day of October 1766, Resu-
rveyed the 24th day of April 1802 agreeable to the Original marked
lines, by order of the Board of Property bearing date the 1st day
of April 1802, in pursuance of a Warrant to William Henry dated
the 9th day of June 1762.

William Piper Deputy Surv^r

To Samuel Cochran Esq^r

Surveyor General.

IN TESTIMONY that the above is a copy of the original remaining on file in
the Department of Internal Affairs of Pennsylvania, made
conformably to an Act of Assembly approved the 16th day of
February, 1833, I have hereunto set my Hand and caused
the Seal of said Department to be affixed at Harrisburg,
this Tenth day of May 1905.

Lucas R. ...
Secretary of Internal Affairs.